



### Lot 1

#### RARE SISTER'S "SPIT" BOX

Maple and pine, four fingers, an exceptional woodworking composition, (top finger is incorporated into the rim as a reinforcement), original light yellow/red varnish stained finish, alligatored, overall excellent condition, Watervliet or New Lebanon, NY, c. 1835-1840, (note: these round boxes were made to relieve the Shakers from the habit of smoking tobacco; although called a Sister's box, it was probably used by a brother at his work, also probably used later as a measure), 3 1/4" h, 7 3/8" dia, (ex. Upton collection, Troy, NY).

Estimate \$1,200 - 1,800

### Lot 2

#### PEG BOARD

Pine, five 2 1/2" maple pegs, finely turned, beveled board on top and bottom, original brown stained finish, c. 1850, 4' 9 1/2" l, 3" w.

Estimate \$400 - 600



### Lot 3

#### OVAL BOX

Maple and pine, original bittersweet red painted finish, four fingers, c. 1840, (note: priced inside lid, 7/9/66 @ \$28.), excellent condition, 2" h, 5 1/4" l, 3 1/2" w, (ex. Ed and Celeste Koster collection).

Estimate \$1,500 - 3,000



### Lot 4

#### PINCUSHION

Rare 19th c. tomato shaped cushion, fitted into a turned maple wine shaped glass, raised lip, three medial scribe lines, over stepped support down to a stepped circular base, 3 1/4" h, 2 1/4" dia.

Estimate \$300 - 500



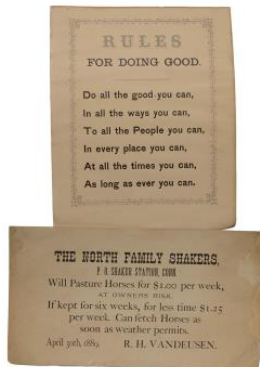


## Lot 5

### TWO SHAKER LABELS IN A FRAME

"Butter Beans, Anna Case Trustee", 4 1/4" x 12", and "Shakers Vegetables, Fresh Tomatoes, Anna Case Trustee, S. Family Shakers", 4 1/2" x 13 1/2", finely matted in light blue.

Estimate \$300 - 600



## Lot 6

### TWO SHAKER BROADSIDES

"Rules for Doing Good...", 9 3/4" h, 8" w; and "The North Family Shakers, P.O. Shaker Station Conn. Will Pasture Horses for \$1.00 per week...", 6" h, 10 3/4" w, some light staining.

Estimate \$400 - 600



## Lot 7

### MINIATURE SHAKER STYLE FURNITURE

Collection of miniatures includes carved wood double heater stove, wood box, ash shovel, Meetinghouse bench, trestle table signed "GH" and dated "1978.", settee with taped back and seat, long bench with slat back, oval box, stool, three finger oval carrier, ladderback chair, and washstand with hinged door.

Estimate \$300 - 500



## Lot 8

### OVAL BOX

Maple and pine, in original soft peach/putty painted finish, three fingers, large copper tacks, (note: originally priced underneath \$35.), rare color, small split at left top of lid. otherwise very good, 2 1/2" h, 6 1/4" l, (ex. Ed and Celeste Koster collection).

Estimate \$500 - 700



### Lot 9

#### PAINTING OF HARVARD SHAKER VILLAGE

Oil on canvas board, depicting Harvard, MA Shaker Village, with a horse and buggy, and Shaker buildings, signed l.r. "Sandy Farnsworth", carved wood frame, signed in ink on back "Lovely Vineyard, Harvard, Ma. Original Oil Painting by Sandy Farnsworth, 1982, Shirley, Ma.", 16" x 20" (sight), 20" x 24" (frame).

Estimate \$300 - 500



### Lot 10

#### CLASSIC PERIOD SHAKER SIDE CHAIR

Birch, original red painted finish, exceptional tall Enfield, NH finials, three graduated ladders, appears to have the original rare woven cane seat, tilters on back legs are missing, very good condition overall, Enfield, NH, c. 1840-1850, 16" seat h, 41" overall h.

Estimate \$800 - 1,200



### Lot 11

#### UTILITY BOX

Poplar, original red painted finish, original lid with carved handle, fastened with three screws, made to fit inside rim, canted and dovetailed sides, beveled baseboard, c. 1850, 3 1/4" h, 11 1/4" sq.

Estimate \$500 - 700



### Lot 12

#### ROUND WORK BASKET

Black ash splint, finely carved inset double handles, double wrapped rim, original splint, reinforced bottom, excellent patina and condition, c. 1860-1880, 14" h (to top of handle), 17 1/2" dia.

Estimate \$500 - 700



### Lot 13

#### OVAL BOX

Maple with ash lid, original nut brown stained finish, three fingers, (small sliver missing at top right rim), 1 1/2" h, 3 1/2" l, (ex. Peladeau collection).

Estimate \$500 - 700



### Lot 14

#### FOUR SHAKER BRUSHES

Turned maple handles, all with double scribe lines at the thickest part of turning, original stained finishes in yellow, red, and brown, all with light to white horsehair bristles, 8" to 9 1/2" approximate size.

Estimate \$300 - 500



### Lot 15

#### RARE BLANKET BOX

Ministry blue painted blanket box, poplar, hinged lid with applied molded and rounded edges, finely dovetailed case, molded low and dovetailed arched base, attached cutout boards at each back foot to keep chest from the wall, interior lidded till on right side, excellent condition and patina, c. 1850, 18 1/2" h, 38" l, 16 3/4" d.

Estimate \$5,000 - 7,000



### Lot 16

#### PALM LEAF CUTTER, AND NEEDLE BOOK

Maple with brass hinged holder, and row of tiny brass blades, yellow tag taped on back "#270 Tool for cutting straw for palm leaf for bonnets, needle book covers, etc., N.F. New Lebanon" (N.F. - North Family), 5 3/4" l; Woven palm leaf needle book with kid leather trim, and purple Shaker silk ribbon, 2 1/4" x 2 1/2" l; (ex. the Bissland collection - 1982, WHA, Pittsfield, MA).

Estimate \$300 - 500



### Lot 17

#### RARE SHAKER PAIL

Pine, original mustard yellow paint, black painted steel wrapping bands, teardrop shaped metal bail plate, with maple handle, medial scribe mark, initialed on bottom in black ink "E.J.N.", New Lebanon, NY, c. 1860, small yellow tag "Shaker Bucket 4164", 6" h (to rim), 11 1/2" h (to top of handle), 10" dia, (ex. Ed and Celeste Koster collection). [Note: Sister Emma Jane Neale (1847-1943) became a trustee at Mount Lebanon in 1882 at the age of 35. Neale was a great businesswoman and created a cloak manufacturing company "E.J. Neale & Co.". Neale lived at Mount Lebanon for 88 years.]

Estimate \$2,000 - 3,000



### Lot 18

#### EXCEPTIONAL SHAKER BOWL

Turned hardwood bowl, original orange painted surface, thin turned walls at rim, small 4" dia raised base, 3 1/4" h, 8 1/2" dia, (ex. Hon. F.M. Reinhold Shaker collection, sold by WHA 9/21/96, lot 139B, Watertown, CT).

Estimate \$1,000 - 2,000



### Lot 19

#### RARE SHAKER APPLE CORER/SLICER

Cherry, steel blades, rectangular form, 32" l, 4 3/4" w, 1 3/4" d, "figure 8" shaped apple holder with 4" turned handle, holder slides up and down in grooved sides, c. 1870-1880, exceptional workmanship, condition and patina, (ex. Faul collection, sold by WHA 9/16/17, lot 149).

Estimate \$500 - 700



### Lot 20

#### PAIR OF SHAKER SIDE CHAIRS

Maple, original dark cherry red stained finish, excellent patina, early rush seats, tilters, New Lebanon, NY, c. 1840, classic form, very fine condition, 16 1/2" seat h, 41" overall h.

Estimate \$1,000 - 2,000



### Lot 21

#### SHAKER DROP LEAF WORK TABLE

Birch, original natural finished top and leaves, original red base, rounded leaves, large 7 1/2" overhang, thin turned legs well proportioned, with Sister's wet mop markings at bottom, Sabbathday Lake or Alfred, ME, c. 1850, in-use wear, overall good condition, 28" h, 42" l, 11 1/2" leaf, 17" d top.

Estimate \$1,000 - 2,000



### Lot 22

#### ADJUSTABLE BOTTLE FILLER

Maple, original finish, height and width are on turned poles and adjustable with threaded thumbscrews, Shaker made tin funnel, turned carrying finial, rectangular platform with half-round molded edges, 20" h, 7 1/4" x 9" (platform).

Estimate \$600 - 800



### Lot 23

#### RARE HORSERADISH SHREDDER

Poplar and white wood, original finish, dovetailed rectangular form with long drawer, cast iron circular shredder with three blades, turned hardwood handle, fitted lid to accommodate shredder, and opening to fit in horseradish root, Canterbury, NH, c. 1870, (note: a wonderful Brother's Shaker device to serve a Shaker Sister's timesaving needs - possibly one-of-a-kind), 14" h, 13 1/2" l, 8 1/2" w.

Estimate \$600 - 800



### Lot 24

#### RARE SHAKER HIGH CHAIR

Child's high chair with footrest, maple and bird's-eye maple slats and footrest, small round style finials, two arched figured maple slats, original dark walnut stained varnish finish, red stripe taped seat, "Only a small number of these chairs were made...", *The Shaker Chair*, page 195, Muller & Rieman, 1984, 21 1/2" seat h, 33" overall h.

Estimate \$1,200 - 1,800



### Lot 25

#### ONE-DRAWER STAND

Cherry and poplar, original varnish finish, wood pegged two-board top, dovetailed drawer with small turned pull at top of drawer, square finely tapered legs, Enfield, CT, c. 1840, (note: purchased at WHA Shaker auction 8/7/88, lot 316), 27 1/2" h, 18" w, 16 1/2" d

Estimate \$800 - 1,200



### Lot 26

#### FRAMED PHOTOGRAPH

Portrait of Elder Henry Green, Alfred, ME, c. 1890, driving a horse drawn wagon with covered trunks, on a road next to a lake, framed and matted, (purchased at WHA Shaker auction 9/26/94, lot 227), 6 1/2" x 8 1/2" (sight).

Estimate \$200 - 400



### Lot 27

#### PHOTOGRAPHIC POSTCARDS

Very fine collection of photographic postcards of Shaker community grounds, buildings, and Sister's, (Sabbathday Lake, ME; Enfield, NH, Canterbury, NH; Harvard, MA; Pleasant Hill, KY), 1886 Almanac, Bertha Lindsay signature, photo portraits, approximately 60 pieces.

Estimate \$300 - 500



### Lot 28

#### VERY FINE OVAL BOX

Maple and pine, original dark cherry red painted finish, four fingers, copper tacks, excellent condition and patina, c. 1840-1850, 4" h, 13 1/4" l, 9 1/4" d.

Estimate \$1,500 - 2,500



### Lot 29

#### VERY SMALL OVAL BOX

Maple and pine, excellent red painted finish, three fingers, interior shows a chrome yellow powdery stain, very fine condition, c. 1830-1840, 1 5/16" h, 3 1/2" l, 2 3/8" d.

Estimate \$1,500 - 2,000



### Lot 30

#### WORK COUNTER

Pine, original yellow stained cupboard, left hand door with double vertical panel, pinned on the diagonal, inside is a bright cherry red stain, second panel with triple vertical panel sliding door, third panel similar triple vertical panel sliding door, opening to medial shelf, top is varnished, slightly rounded edge on front and sides, appears to be butternut tool holder attached to left hand side (small piece missing), possibly New Lebanon or Watervliet, NY, c. 1840-1850, 9' 5" l, 31" h, 18 1/2" w, (ex. Upton collection, Troy, NY).

Estimate \$8,000 - 12,000



### Lot 31

#### CLASSIC SHAKER DUSTPAN

Long handle with round ball finial, shaped shaft with triple rings, tin pan with original black paint, good condition, 31" h, 13" w, 9" d.

Estimate \$1,500 - 2,500



### Lot 32

#### SISTER'S CARRIER

Maple and pine, original light stained red varnish finish, three fingers, bentwood shaped swing handle with handmade copper rivets, (appears to never have had a lid), good condition, 2 7/8" h (to rim), 6 1/2" h (to top of handle), 8" l, 5 1/4" w.

Estimate \$500 - 700





### Lot 33

#### WONDERFUL OVAL BOX

Maple and pine, bright lipstick red painted finish, unique fine elongated and shaped fingers (2 1/2" l), provenance: "Celeste & Edward Koster, Old Chatham, N.Y." with price on bottom "\$135.", excellent condition, 3" h, 8" l, 5 1/4" d.

Estimate \$2,000 - 3,000



### Lot 34

#### SMALL ROUND LIDDED BASKET

Ash, conical shaped fitted lid, with remnants of a blue silk ribbon at top, single wrapped base and rim, inverted shaped base, very fine condition and patina save for two or three tiny missing splints, 1 1/2" h (sans lid), 3" h (to top of lid), 2 3/8" dia (bottom), 3 3/4" dia (top).

Estimate \$400 - 600



### Lot 35

#### ROUND GATHERING BASKET

Black ash splint, finely shaped hoop handle, single wrapped rim, slightly inverted base, overall very good condition, in a brown patinated finish, 4 1/4" h (to rim), 8" h (to top of handle), 6 1/2" dia.

Estimate \$300 - 500



### Lot 36

#### SISTER'S WORK TABLE

Maple and pine, original red painted finish, single board overhanging rectangular top, single drawer with finely turned Shaker pull, symmetrically nailed construction, drawer support double pegged into front, square tapered legs, skirt with two Shaker pegs on both sides for hanging sewing tools, (note: probably Maine origin), 25 1/2" h, 25" w, 19" d, (sold Skinner Auctions, 2/29/99, lot 569).

Estimate \$1,500 - 3,000



### Lot 37

#### APPLE BOX

Pine, original dark green over gray painted finish, square with canted and dovetailed sides, half-round molded baseboard, T-head symmetrically nailed construction, excellent condition with minor in-use wear, 2 3/4" h, 9 3/4" sq.

Estimate \$500 - 700



### Lot 38

#### SHAKER RAVEL RUG

Wool, handwoven with multicolor remnants, with central extended diamond in red and gray, horizontal line colored pattern, appears to have been attached to mattress ticking in a Shaker fashion, ["The technique of sewing strips of knitted material to a foundation, then unraveling the unsewn edge, lended itself well to the Shakers, since knitted items were common in some of their communities" Jeff Good, Shaker rug expert], professionally mounted on a frame for hanging, (note: consignor told it was found in Canterbury, NH), 37" h, 33" w.

Estimate \$800 - 1,200



### Lot 39

#### SIGNED SISTER'S WORK BASKET

Ash, lengthwise double notched carved hoop handle, single wrapped rim, tagged "To Ted & Marilyn, Christmas 1975, from Sister Ethel Hudson, Canterbury, N.H.", carved initials "MH" on side of handle, some minor insect damage at one end of rim, 10" h (to rim), 17" h (to top of handle), 20" l, 15" w.

Estimate \$800 - 1,200



### Lot 40

#### OVAL BOX

Maple and pine, natural finish, three fingers, wood pegged and fingers fastened with small copper tacks, 2 3/4" h, 6 1/4" l; along with four early turned Shaker pegs (3" l), Shaker turned spool (4" l), and a turned needle holder in the shape of a rolling pin; (note: purchased at WHA Shaker auction 11/26/94, lot 126).

Estimate \$300 - 500



### Lot 41

#### YARN STRETCHER, AND GATHERING BASKET

Walnut in original finish, table top style, carved clamp with threaded thumbscrew, steel pin to hold stretcher, sliding horizontal yarn holders, each with a carved thumbscrew tightener, c. 1860, (note: purchased at WHA Shaker auction 9/22/91, lot 298), 10" h, 13" l (closed), 33" l (fully opened); Black ash splint, carved maple hoop handle with patina, round top and squared base, single wrapped rim, one corner of base shows some reweaving, otherwise good overall, 12" h (to top of handle), 9 1/2" dia (at rim), 5" sq (at base), (sold at the Albany Auction Gallery, 8/22/93, lot 194, ex. Upton collection).

Estimate \$400 - 600



### Lot 42

#### RARE CHILD'S ROCKING ARMCHAIR

Original dark brown painted finish, acorn finials, three shaped ladders, original red and beige taped seat, curvilinear arms with mushroom caps, exceptionally bright, Mt. Lebanon No. "0" Trademark on back of bottom slat, excellent Mt. Lebanon, NY production rocker, c. 1880, in very good condition, 9" seat h, 23 3/4" overall h.

Estimate \$1,000 - 1,500



### Lot 43

#### CHILD'S ROCKING ARMCHAIR

Maple, original brown painted finish, curved shawl bar over three shaped ladders, nicely faded woven red and green stripe taped seat, curvilinear arms with mushroom caps, pale yet discernable Mt. Lebanon Shakers No. "0" Trademark on back of bottom slat, excellent example of the smallest of the production rockers, c. 1880, very good condition, 8 3/4" seat h, 23 1/2" overall h.

Estimate \$700 - 900



### Lot 44

#### SHAKER ELDER'S ROCKING ARMCHAIR

Maple and tiger maple, retaining an original rare red stained surface, scroll arm, tapered front posts with a small collar turned just below the arm, thin rocker blades set into slots in the legs and affixed with wooden pins, appears to be original ash splint seat, Mt. Lebanon, NY, c. 1840, 15 1/2" seat h, 44 1/4" overall h.

Estimate \$2,500 - 3,500



#### Lot 45

##### SHAKER SLANT LID DESK

Cherry, pine and tiger maple, hinged lift lid, opening to an interior storage compartment of seven cubbyhole sections, slender turned tiger maple legs, c. 1850, 29 1/2" h to front, 35" overall h, 29 3/4" w, 22 1/2" d.

Estimate \$800 - 1,200



#### Lot 46

##### SISTER'S BONNET BOX AND BONNET

Rectangular, thin stock, butternut wood box, symmetrically nailed construction, with original green paper edging, natural finish with good patination, in-use wear, finely fitted lid, Canterbury, NH, c. 1880, 11 1/2" h, 11" l, 8 1/2" w; with an early Sister's poplarware bonnet, interior silk lining, some fine poplarware unraveled in back of bonnet, c. 1870, 6" h, 8" l.

Estimate \$600 - 800



#### Lot 47

##### RARE SHAKER HANDLED SIEVE, AND TWO PAPER SEED BAGS

Turned handle with medial scribe line, woven colored horsehair, overall good condition and patina, 7 1/2" h (to rim), 9" dia; Paper seed bag, "1 pt. BEANS" with directions on the bag, "D.M., from Shakers' Gardens, New Lebanon, N.Y.", 9 7/8" h, 5 1/4" w, other bag "4 oz. BEET" with directions on the bag, "D.M., from Shakers' Gardens, New Lebanon, N.Y.", 8 1/4" h, 5 1/4" w.

Estimate \$400 - 600



#### Lot 48

##### SEED BOX

Pine, original mustard yellow painted finish, "Shakers Choice Vegetable Seeds, DM Mount Lebanon, N.Y." (David Meacham, Trustee), sectioned for sale of seeds consigned to world country stores, sans lid, label 95% intact with rubbings and in-use wear, 4 1/2" h, 22" l, 9 1/4" d.

Estimate \$600 - 900



### Lot 49

#### RARE COLLECTION OF SHAKER TIN PIECES

Covered containers, dippers, lamp fillers, scoops, mustache cup, mostly Canterbury and Enfield, NH, most are tagged from 9/5/2005 Doug Towle Shaker Auction, (18 pieces).

Estimate \$400 - 600



### Lot 50

#### TRIPOD STAND

Maple, round top, appears to be original red painted finish, shaped shaft, three arched legs, iron plate underneath fixed with homemade screws and nails symmetrically placed, probably Mt. Lebanon, NY, c. 1850, 23 3/4" h, 16" dia top.

Estimate \$4,000 - 6,000



### Lot 51

#### FINE SHAKER SISTER'S SPOOL CARRIER WITH SPOOLS

Cherry, original patinated finish, turned central peg top handle, rounded form with wood pegs for six spools, one spool has light brown wool thread, five spools total, 3 3/4" h, 5 1/2" dia.

Estimate \$1,000 - 1,500



### Lot 52

#### SISTER'S LAUNDRY BASKET

Black ash splint, double wrapped rim, arched side handles, finely sewn reinforced base, marked "1" in black paint, c. 1860-1870, good condition, 14" h (to rim), 19" dia.

Estimate \$700 - 1,000



### Lot 53

#### COLLECTION OF SEVEN OVAL HAND MIRRORS, AND A BRUSH

Tapering handles, one small example with a hairbrush on the reverse side, (see Hands to Work: Shaker Folk Art and Industries, 1972, page 161, Marian Klamkin), 4 1/4" to 12 1/4" l; Finely turned, maple, white horsehair bristle brush, stamped "17" on handle, medial scribe line, eyelet screw for hanging, 10" l.

Estimate \$400 - 700



### Lot 54

#### COLLECTION OF SISTER'S MINIATURE BASKETRY OBJECTS

Scissor case with early engraved scissors, two basketry thimble cases, and a larger lidded basket, and two basketry holders for tomato pincushions (one green, one red), (six pieces).

Estimate \$300 - 400



### Lot 55

#### RARE TRUSTEE'S SLANT LID DESK BOX

Cherry, walnut and poplar, pine top, long slant lid with worn green felt covering (modern cut replacement), opening to large storage compartment, 6 3/4" gallery top, finely dovetailed, separate utility box, finely dovetailed for pens, pencils and clips, handmade screws around circumference of lid for 1/8" quarter-round applied molding, c. 1870-1880, 6" h (at gallery), 4" h (at lip), 27" l, 19 1/2" w.

Estimate \$1,200 - 1,600



### Lot 56

#### SISTER'S CLOAK

Cherry red dyed wool, black silk lined ties, blue labeled "The Dorothy, Hart & Shepard, Shakers, E. Canterbury, N.H.", some wear to the black silk lining, few tiny moth holes, 52" l.

Estimate \$500 - 700



### Lot 57

#### UNIQUE SHAKER BED

Pine and maple, original green/blue painted finish, shaped Shaker headboard fastened to rails with handmade screws, heavy cotton canvas nailed to rails (5' 5" l), "59" in ink on canvas near headboard, four turned and carved legs (unpainted), exceptional museum quality bed, unique construction underneath, original wood pegged and through mortised wheels, c. 1860, excellent condition, (possibly used in infirmary), 24 1/2" h (to top of backboard), 27" w, 15" h (to canvas).

Estimate \$600 - 900



### Lot 58

#### CLASSIC SHAKER SIDE CHAIR

Maple, original varnish finish, three graduated slats, tall shaped flame finial, red and beige taped seat, "19" stamped on right front post, (note: this pertains to which room the chair originally belonged), Watervliet, NY, c. 1850, excellent condition, 16 1/2" seat h, 42 1/2" overall h.

Estimate \$400 - 600



### Lot 59

#### OVAL BOX

Maple and pine, four fingers, copper tacks, finely fitted lid, older blue paint over original finish, c. 1840-1850, 4 3/4" h, 11 7/8" l, 8 1/2" d.

Estimate \$1,000 - 1,500



### Lot 60

#### STACK OF FIVE SHAKER BOXES

Birch, maple and pine, variable shades of original red paint and stain, bottom box is labeled inside "Rosetta Cummings", Enfield, N.H., (note: the consignors great-grandmother was a very good friend of Sister Cummings and other Enfield Sisters), five finger construction, 4 1/4" h, 11 1/4" l; Four finger box, 3 3/4" h, 9 1/8" l; Four finger box, very good orange/red stain, 3 1/4" h, 8 1/8" l; Three finger box, (lid possibly from another box, some interior stains, otherwise good), 2 1/2" h, 2 5/8" l; Top box, three fingers, overall good with a few interior stains, 2 1/8" h, 5 1/4" l.

Estimate \$4,000 - 6,000



### Lot 61

#### TWO HISTORIC OVAL BOXES

Smaller box, cherry and pine, five fingers, original varnish finish, certified by Sister Mildred Barker, tagged "Signed (old stamp) Cherry Oval fingered Box made by Delmer Wilson, the last Shaker Brother at Sabbathday Lake #7 #242", small nail break at upper rim, otherwise very good condition, 4" h, 11 1/8" l, 7 1/2" d; Larger box, cherry, five elongated fingers, copper tacks, varnish finish, a note found with it stated "Large oval cherry fingered box made by last brother at Hancock, Massachusetts Shaker Community, Elder Ricardo Belden", two small splits at either end of break, 6" h, 13 1/4" l, 9 1/8" d.

Estimate \$800 - 1,200



### Lot 62

#### CLASSIC 19TH C. SHAKER ROCKING ARMCHAIR

Cherry wood, old finish, tall flame finials with medial scribe line, four graduated ladders, finely carved arms, early rush seat, rockers bolted with hand-forged nuts and bolts, double stretchers in front, rocker extends beyond front stile and is carved in classic Harvard Shaker style, c. 1840-1850, excellent condition, 15" seat h, 46 3/4" overall h.

Estimate \$3,000 - 5,000



### Lot 63

#### CARRIER

Cherry and pine, original varnish finish, two fingers, small copper tacks, shaped and carved ash handle, symmetrically nailed, c. 1900-1920's, very good condition, 2 3/4" h (to rim), 8" h (to top of handle), 13" l, 9 1/4" d.

Estimate \$800 - 1,200



### Lot 64

#### RARE SISTER'S TWO STEP STOOL

Pine, original yellow painted finish, "D. No. 6." in pencil under first step, dovetailed back stretcher, very finely proportioned and constructed, fine color, 15 1/2" h, 15" w, 13 1/4" d.

Estimate \$1,500 - 2,000





### Lot 65

#### CHILD'S ROCKING ARMCHAIR

Maple, original dark walnut varnished stain, woven split cane seat (probably original), small acorn finials, hand rests of a lighter color, stamped "1" on upper back of top slat, Mt. Lebanon, NY, c. 1880, 12 1/2" seat h, 28 3/4" overall h.

Estimate \$400 - 600



### Lot 66

#### SHAKER ADVERTISING CARDS IN A FRAME

Four children's medicine advertising cards, "Shaker Family Pills", "Extract of Roots", "Shaker Soothing Plasters, AJ White", and "Shaker Extract of Roots, R. Siegel", all in good condition, each card 4 1/2" to 5" h, 2 3/4" w.

Estimate \$300 - 500



### Lot 67

#### RARE QUEEN BEE CONTAINER

Tiger maple and maple, oval lidded and handled container for moving the queen bee from one hive to another, swiveling lid in tiger maple, turned knob at end of handle, c. 1860-1870, found in New Hampshire, 1 1/4" h, 8" l, 1 3/4" w.

Estimate \$600 - 800



### Lot 68

#### SMALL SAMPLER

Green thread on an openwork background, alphabet in capitals, and numbers "1-10" below, 1 3/4" h, 2 3/4" w, placed in a carved wood and gilded frame, 8 3/4" x 10 3/4".

Estimate \$800 - 1,200

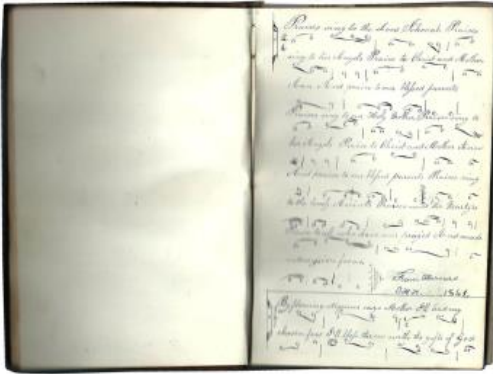


### Lot 69

#### CLASSIC FOLDING TOWEL RACK

Pine, original yellow painted finish, two panels, iron hinged with two crossbars, classic Shaker construction, through mortised with wood pins, (note: excellent color), c. 1830-1850, 29 1/2" h, 29 3/4" l.

Estimate \$400 - 600



### Lot 70

#### VERY RARE SHAKER HYMNAL

Rare leather bound compendium, handwritten script in blue ink on white pages, of Shaker Hymns gathered together from a number of communities, words, poems and musical notes, all written in the same hand, on approximately 130 pages (on both sides of each page) from 1840-1845, reinforced with red cloth tape on the inside of the front and back cover, the book itself shows minor warpage and the spine shows minor damage, New Lebanon, NY, 7 1/2" h, 5" w.

Estimate \$6,000 - 8,000



### Lot 71

**THREE SHAKER PRINTED HYMNALS, AND A BOOK**  
Hymnals titled "Sacred Songs", 1899, initialed on outside cover, green cloth bound, "Alice Smith, Christmas 1899. From Emoretta.", "Bessie Dietrich, West Pittsfield, May 2, 1912", "Dec. 25, 1899 Julia Launsbury From Emoretta. Jennie Peteff", Church Family; Book *Shakerism: Its Meaning and Message* by Anna White and Leila S. Taylor, brown cover.

Estimate \$500 - 700



### Lot 72

#### EARLY SHAKER DANCE PRINT

"Shakers Near Lebanon", rare 1830 stone lithograph print, hand tinted, some tears with very old paper repairs, light creasing, age toning, and light stains, full margins, image size 8 7/8" x 12 6/8", full size 13 1/4" x 17 1/4", (note: based on color lithograph by Anthony Imbert, c. 1826).

Estimate \$500 - 800



### Lot 73

#### OVAL BOX

Pine and maple, original mellow chrome yellow paint, varnish finish, four fingers, label inside cover "Ed & Celeste Koster, Old Chatham, NY.", exceptionally good condition, 3 3/4" h, 8 5/8" l, 5 3/4" d.

Estimate \$2,000 - 3,000



### Lot 74

#### CANTERBURY SHAKER DINING CHAIR

Maple and pine, low wedge shaped back rail, six spindles, pine boldly beveled plank seat, canted turned legs, (missing left stretcher), see *The Shaker Chair*, Muller & Rieman, 1984, Canal Winchester Press, page 59, "This may be the style of dining chair attributed by Elder Henry Blinn to Brother Micajah Tucker.", (note: low back to tuck under dining table), 17 1/2" seat h, 25 1/2" overall h.

Estimate \$300 - 400



### Lot 75

#### SHAKER BLANKET BOX

Pine and poplar, original red painted finish, hinged lift lid, with paper tag "Shaker Blanket Box, from Watervliet, N.Y.", and two cleats affixed with hand-forged screws, dovetailed case, interior with open till box and dovetailed drawer under, (originally Ed Clerk collection), Watervliet, NY, c. 1840, shows some scratching and in-use wear, good overall condition, 13" h, 30 1/2" l, 13 1/2" d.

Estimate \$500 - 700



### Lot 76

#### COLLECTION OF POSTCARDS

Over 40 postcards showing buildings, rooms, and other scenes at several Shaker communities, including Sabbathday Lake, ME; Enfield, NH; Canterbury, NH; Old Chatham, NY; and Auburn, KY; most are in color, a few in black and white.

Estimate \$200 - 300



### Lot 77

#### POPLARWARE

Large doll's bonnet with silk blue ribbon, (shows wear), 4" h, 5 1/2" l; Pincushion with blue velvet tomato sewn top, blue silk bow on front, kid leather trimmed, 2 1/2" dia; Needle case, kid leather trimmed, sweetgrass accents, 2" h, 2 1/4" w.

Estimate \$300 - 500



### Lot 78

#### SHAKER MANIFESTO COLLECTION

Several pamphlets including eight copies (different months) from 1878; two copies from 1880; two copies from 1881; two copies from 1884; two copies from 1885; two copies from 1886; and one copy from 1887; some from Canterbury Shaker Village, NH, most are intact, in-use wear, staining to paper covers; 19 total.

Estimate \$250 - 350



### Lot 79

#### OVAL BOX

Maple and pine, original cherry red painted finish, wooden pinned along edges, copper tacks, four fingers right to left, c. 1830, excellent condition, 4" h, 10 1/2" l, 7 1/2" d.

Estimate \$1,200 - 1,500



### Lot 80

#### RARE SISTER'S CARRYING/BONNET BOX

Poplar, original bittersweet red painted finish, fitted with leather strap for carrying handle, brass hinged lid, four maple pegs inside for bonnets, excellent condition, 13 1/2" h, 19 3/4" w, 18" d.

Estimate \$2,000 - 3,000



### Lot 81

#### THREE HORSEHAIR SIEVES

Maple, graduated in size, in original finish, original patina, all in good condition, 5 1/2" dia; 4" dia with small sticker "Roger Bacon", (note: Roger Bacon was a well known antique dealer in NH in the 1950's-80's); 2 1/4" dia.

Estimate \$300 - 500



### Lot 82

#### THREE SHAKER BRUSHES

Maple and walnut, tapered handles, all with black horsehair bristles, each wrapped with velvet, cotton and a braid, all in excellent condition, 8 1/2", 9 1/2" and 9 1/4" l.

Estimate \$300 - 400



### Lot 83

#### BOOK AND PAMPHLETS

*Christ's First and Second Appearing*, 1856, 4th Edition, *Testimony of Christ's Second Appearing*, published by the United Society called Shakers, over 600 pages; Pamphlets - Five "Manifestos", and "A Brief Exposition of the Principles and Regulations"; Print of Shaker Settlement in Canterbury; Photograph of two Shaker Sister's in black and white.

Estimate \$200 - 400



### Lot 84

#### LARGE SHAKER CARRIER

Maple and pine, original red stained/wash, five fingers, fitted lid with finger, arched carrying handle attached with copper rivets, copper tacks symmetrically aligned along the fingers, small break below bottom finger, missing piece 1/2" l, otherwise excellent condition, 6 1/4" h (to rim), 12" h (to top of handle), 14 3/4" l, 10 1/4" d.

Estimate \$800 - 1,200



### Lot 85

#### STANDING SHAKER WOOD BOX

Pine, original lemon yellow painted finish, hinged lift lid, breadboarded, dovetailed case on turned legs (replaced due to water damage), square to round, 8" h legs, Sabbathday Lake, ME or Alfred, ME, c. 1850, overall in-use wear, 30 1/2" overall h, 26 1/2" w case, 18 1/2" d.

Estimate \$1,000 - 2,000



### Lot 86

#### SMALL DRYING RACK

Possibly for herbs, maple, original brown painted finish, rectangular shaped rungs, through mortised into the sides, arched base, beveled edges, 24 1/2" h, 15 1/2" w.

Estimate \$300 - 500



### Lot 87

#### RARE SHAKER TIN STOVE

Oval shaped with three penny feet, hinged door with Shaker cast iron ring opening latch, separate Shaker tin teapot with extended base to fit in stove top, swing handle, overall good condition, 19" h, 29" h (to handle of teapot), 20" l, 12" w.

Estimate \$500 - 700



### Lot 88

#### PAIR OF 19TH C. SHAKER STOVE TOOLS

Hand forged tongs and shovel, to remove ash from stove, finely shaped handles, overall good condition with minor rust, (note: a classic form used in almost all Shaker communities).

Estimate \$300 - 500



### Lot 89

#### TWO COLORFUL SHAKER CAN LABELS

"Shakers' String Beans., Packed by the Shakers, D.C. Brainard..., at Mount Lebanon, N.Y.", 4 1/2" x 14" l, (note: see page 66, *Inspired Innovations*, M. Stephen Miller).

Estimate \$400 - 600



### Lot 90

#### RARE BLANKET CHEST

Poplar, original ministry blue painted finish, lift lid opening to deep well, over two graduated, dovetailed, full-length drawers, original turned and threaded hardwood capped mushroom pulls, half round footed base, c. 1840, (sold WHA, 10-14-07, lot 100), 42" h, 41 1/2" w, 17 1/2" d.

Estimate \$4,000 - 6,000



### Lot 91

#### RARE SHAKER PILL BOARD

Birch, cherry, and steel, rows of 1 1/2" h pill drying pins,( a few are missing), and a small peg in a cherry board (possibly used for shaping the pills), 10" h, 11" w.

Estimate \$500 - 700



### Lot 91A

#### CLASSIC SHAKER OVAL CARRIER

Maple and pine, original chrome yellow painted finish with patina, finely shaped fixed hickory handle, fastened with copper tacks, (note: one tack missing on back and renailed), four fingers finely measured, painted on all sides, exceptional color and patina, 4" h (to rim), 7 3/4" h (to handle), 11" l, 4 3/4" w.

Estimate \$3,000 - 6,000



### Lot 91B

#### 19TH C. HANGING SHAKER MIRROR HOLDER

Poplar and birch, tall curved backboard, with hole at top for hanging on a peg board, rectangular birch base with raised lip, classic Shaker form in light red/brown stain, tagged at top and in ink "From the Shakers", (note: probably North Family, New Lebanon, as most of the Bissland collection was acquired there in the 1950's/60's), 24" h, 10 1/2" w at base, (ex. Bissland collection).

Estimate \$600 - 900



### Lot 91C

#### VERY EARLY TRIPOD ROUND TOP WORK STAND

Maple and birch, remnants of early red stain, (appears to have had a white painted finish removed), round top with unusual concentric circular scribe lines, slightly raised carved lip possibly so pins and needles stay on top, shaped cleat fastened with four handmade screws, Shaker turned shaft threaded into cleat, slight scribe line swell at midpoint, tin plated bottom with rosehead nails, early repair (Shaker?) at juncture of one leg, c. 1810-1820, remnants of a "WHA" tag underneath, 24 1/2" h, 16" dia top.

Estimate \$2,000 - 3,000



### Lot 91D

#### BENCH WITH TRESTLE FOOT BASE

Pine, original red stained finish, back with applied molding, single board seat, slanted arms, mortised and pegged trestle base, c. 1840, 33" h, 8' l, 17" d.

Estimate \$800 - 1,200



### Lot 91E

#### RARE SHAKER WOODEN ARMREST

Birch and maple, original red stain, curved 19th c. bench style arm raised on two shaped pillars, mounted and through mortised, on a beveled rectangular platform, (note: probably made for guests as they watched the Shakers dancing), 10 1/2" h, 12 1/4" l, 5 3/4" w.

Estimate \$400 - 600





### Lot 91F

#### TWO MATCHING CUTLERY TRAYS

Oak or chestnut, maple turned handles, original red and green painted finishes, bentwood form, good condition, 4" h (to top of handle), 13" l, 8 5/8" w.

Estimate \$300 - 500



### Lot 91G

#### RARE SHAKER TABLE TOP FRUIT SQUEEZER

Tiger maple, original finish with excellent patina, 5 1/4" l handle with triple scribe lines, 8" h, rectangular base (12" l x 4" w), with three turned pillars holding top mechanism, rectangular two piece hinged top opening to a circular opening with five drilled holes for juice, top section with inserted circular fruit crusher, excellent condition, and exceptional stripped tiger maple throughout.

Estimate \$400 - 600



### Lot 91H

#### SHAKER BRUSH COLLECTION

Five corn broom whisks, three with green and red velvet tops, a larger whisk with wire and turned wood handle, 8" l, and an exceptional delicately turned handled white horsehair brush, 8" l; a black painted wood handled white horsehair, 7" l; and an unusual turned wood handle wire brush with turned knob finial, 5 3/4" l; (eight pieces).

Estimate \$400 - 600



### Lot 91I

#### ROLLING PIN, AND WORK CARRIER TRAY

Tiger maple roller, maple handles with triple scribe lines, 20" l; 19th c. rectangular dovetailed carrier, in cherry wood, with medial cutout handle, traces of red stained finish, bottom attached with symmetrically aligned, handmade screws, overall good condition, with in-use stains in bottom of carrier, 3 3/8" h (to rim), 14 1/2" l.

Estimate \$400 - 600



### Lot 91J

#### SMALL OVAL BOX

Maple, ash, and pine, three fingers right to left, small copper tacks, very good condition, 1 3/8" h, 3 1/4" l.

Estimate \$400 - 600



### Lot 91K

#### RARE SHAKER WOODEN BASKET FORM

Very dense hardwood basket form, 7" h, 9" dia, rotating turned maple handle, 23" overall h, (note: this was used inverted and the handle fit into a hole in the work table, the form rotated so the weaver could always keep the work before him), stamp signed "E.B. White" at base of handle.

Estimate \$400 - 600



### Lot 91L

#### RARE SHAKER VEGETABLE STORAGE CONTAINER

Cherry wood, 12 graduated and dovetailed drawers, four banks of three drawers, each stenciled in yellow letters, yellow, red and white onions, flat and long turnip, ruta бага, yellow tomato, original turned wood pulls, (note: original built-in on left side), breadboarded top, Tyringham, MA, c. 1850-1860, 33" h, 81" w, 39" d.

Estimate \$3,000 - 5,000



### Lot 92

#### SMALL CHEST OF DRAWERS

Pine, original dark red painted finish, dovetailed case, four graduated drawers with graduated turned pulls, (note: each drawer has interior grooves along both sides indicating it was to be used for certain types of storage, such as spools or seeds), 9" h, 16 1/2" w, 13" d.

Estimate \$700 - 900



### Lot 93

#### RARE EARLY ROUND SHAKER BOX

Pine and birch, original red painted finish, c. 1830, symmetrically nailed lap with hand forged iron nails, small break at bottom edge and 1/4" missing between two nail joints, and top shows small series of holes over 1/2 surface, original Shaker paper printed label "Mullein Leaves, Alfred, Me.", (note: Mullein leaf is a medicinal herb used to treat infections and is derived from the *Verbascum Thapsus* plant), 4 3/4" h, 10" dia.

Estimate \$800 - 1,200



### Lot 94

#### SISTER'S SHAKER STORE ITEMS

Pair of early red cotton "Shoe carriers from the Store at Sabbathday Lake, 8-" on the attached yellow sales tag, 13" l; Red silk and wool needle book, 3 1/4" h; Red leather roll up sewing case, red velvet ends, 4 1/2" w; Green wool sewing pocket with red interior, green silk tie, 4" w; (all show in-use wear).

Estimate \$300 - 400



### Lot 95

#### SHAKER COMMODE

Pine, original red painted finish, hinged lift lid, arched sides, symmetrically nailed construction, hinged side door to retrieve basin, arched end boards (3" h), c. 1850, 16 1/2" h, 18" w, 16 1/4" d, (ex. Upton collection, Troy, NY).

Estimate \$1,000 - 1,500



### Lot 96

#### TWO HANCOCK SHAKER YARN SWIFTS

Maple, original yellow stained varnish finish, adjustable width, (note: smaller swift shows a break on an arm, and small piece missing), 20 1/2" and 17" l.

Estimate \$300 - 500



### Lot 97

#### FOUR UTILITY SPLINT BASKETS

Three round with square bottoms, all with hoop handles, 8 1/2", 6 1/2" and 6" h (to rim), (all show some minor breaks); and a round carved hoop handle basket, with double wrapped rim, 5" h.

Estimate \$400 - 700



### Lot 98

#### TWO RECTANGULAR BOXES

Pine and birch, light varnish finish, very finely dovetailed case, brass hinged fitted lid, blue pattern paper lined interior, Canterbury style interior, 4" h, 9" l, 5" d; Pine, natural finish, lift lid, wire hinged box, square nailed, 7" h, 17" l; 8" d.

Estimate \$500 - 800



### Lot 99

#### BRUSH AND CARRIER

Finely turned handle (5 1/2" l), red/brown original stained finish, flared beige horsehair whisk, 4" at the widest part; Sister's carrier, shaped swing handle with copper rivets, four fingers finely shaped from right to left, pink silk interior (sans fittings), 3 3/8" h, 9 1/2" l, 6" d. [Note: Lot includes a card printed "From, East Canterbury, Mer. Co. N.H.".]

Estimate \$400 - 600



### Lot 100

#### TWO LONG SHAKER PEG BOARDS

Pine, maple and cherry pegs, original putty/cream painted boards, natural varnished pegs, 8 pegs and 13 pegs, (note: some pegs have been replaced with antique pegs, some paint is missing on one board), 7' 4" and 7' 5 1/2" l, 2 3/4" w.

Estimate \$1,000 - 1,500



### Lot 101

#### SHAKER BASKET; AND TWO PINCUSHIONS

Black ash splint basket, very finely cut, lidded with basketry ring lift, sweetgrass rims, single wrap weave, 3" h, 5" dia; Two scallop shell pincushions, (2" and 1 1/2"), Shaker Sister's fancywork sold in Shaker stores, shells gathered by the Shakers in NH and ME, one has remnants of original blue silk bow, stuffed with cotton, plaid covering, (note: see *Inspired Innovations*, page 145, by M. Stephen Miller).

Estimate \$300 - 400



### Lot 102

#### THREE FRAMED SHAKER TRADE CARDS

"Shakers Apple Sauce NF (North Family) Mt. Lebanon", "North Family Shakers Choice Fall and Winter Apples", "Maine Apples McIntosh, Grown and Packed by D.C. Wilson, Sabbathday Lake, Maine", red mat, each card 1 1/2" x 6".

Estimate \$300 - 400



### Lot 103

#### SEED BOX

Pine, original red painted finish, leather hinged lid (not attached), top breadboarded, labeled "Shaker's Garden Seeds...New York", originally six-sectioned interior, labeled "Onion", "Radish", "Cabbage", etc., in-use wear, 3" h, 23 1/4" l, 12" d.

Estimate \$400 - 600



### Lot 104

#### SHAKER CARRIER

Tiger maple, pine bottom, copper riveted bentwood handle, two finger with small copper tacks, (Lot 111 tag on it), 8" h, 14 1/2" l, 11" d.

Estimate \$400 - 600



### **Lot 105**

#### **SHAKER BLANKET BOX**

Pine, original ministry blue painted finish, hinged lift lid, dovetailed case, cast iron carrying handles on either side, fine applied and molded baseboard, c. 1850-1860, 16 1/2" h, 3' 7 1/2" w, 20 1/2" d.

Estimate \$1,000 - 2,000

### **Lot 106**

#### **PEG RAIL**

Poplar and maple, old red painted finish (possibly original), thumbnail molded base and top, eight 3" l heavy turned maple pegs, possibly used in barn for tack and bridles, 47" l, 4 1/2" w.

Estimate \$300 - 500



### **Lot 107**

#### **APPLE BOX**

Figured poplar and poplar, original ochre stained varnish finish, brass round nail construction, rectangular form with canted sides, inset handles on the ends, used in the process of dried apples, 4 1/2" h, 17 3/4" l, 13" w, (Hazel and Robert Belfit collection).

Estimate \$500 - 700

### **Lot 108**

#### **TWO OVAL TABLE MATS**

Variegated walnut, cherry and maple, Enfield, CT, c. 1900-1920's, 12 1/4" l, 9" w and 8 1/2" l, 6" w.

Estimate \$300 - 500





### Lot 109

#### TWO SISTER ROLLING PIN

Ash or hickory, (note: this is the longest roller we have ever cataloged), 3' 10 1/2" l, 2 1/2" dia at widest in middle.

Estimate \$300 - 500



### Lot 110

#### ROCKING ARMCHAIR

Maple, original natural varnish finish, Shaker production chair with shawl bar, three slat, curvilinear arms with oversized mushroom caps, beige and caramel brown taped seat, stamped "5" on back of upper slat, faint trace of Trademark decal on back of bottom slat, Mt. Lebanon, NY, c. 1880, very good condition, 16 1/2" seat h, 37 1/2" overall h.

Estimate \$500 - 700



### Lot 111

#### SMALL EARLY OVAL BOX

Maple and pine, original brown stained finish, three fingers, small old nick on lid with patina, c. 1820-1830, 1 1/4" h, 3 5/8" l.

Estimate \$400 - 600



### Lot 112

#### SHAKER T-SQUARE, AND STRAIGHT EDGE

Walnut and maple T-square, 2 1/2" w, 45 3/4" l, 2 1/2" T-part, affixed with five screws; Straight edge, 6" l, 3 1/2" w; both have holes at end for hanging.

Estimate \$300 - 500



### Lot 113

#### SHAKER WOODEN PIECES

Small turned wooden maple box, lid with turned finial, some illegible writing on side, 4 1/2" overall h; Donut cutter, turned, with double line scribe handle, 4 1/4" h, 2 1/2" dia; Maple spool, Shaker turned handle with scribe marks at median point, 5 1/8" h, 1 3/4" dia.

Estimate \$300 - 500



### Lot 114

#### SHAKER WOODEN OBJECTS

Two small iron-shaped pieces, with wonderfully turned Shaker knobs, 2 1/2" and 2" l; Small delicately carved butter marker stamp with central 10-pointed star, 2" dia; Tiny 36" tape measure used by Shakers (probably not Shaker made), 19th c., 1" dia; Small maple spool, light purple thread, 3/4" h; Sewing square, maple, for winding thread, pointed ends, 1 1/4"; (ex. Bissland collection - numbered by him for museum he was starting in the 1950's/60's).

Estimate \$300 - 500



### Lot 115

#### CHEESE PRESS

Maple, original red painted finish, rectangular posts supporting a heavy block above, with a central large wood turnscrew to press the liquid from the curds, rectangular red painted pine box, carved base with an open trough for the runoff, c. 1840-1850, (Kitty Haas collection), 32" h, 29" l, 18" w.

Estimate \$300 - 500



### Lot 116

#### FRAMED SHAKER PEACHES LABEL

Yellow paper with red print and design, "Preserved Peaches, ready for the table from the Harvard Shakers. Sold by William Leonard, Groton Junction, Mass.", 4 3/4" h, 6 1/2" w (label), 22 1/2" x 21" (frame).

Estimate \$300 - 500





### Lot 117

#### SHAKER LIDDED PAIL

Pine, original yellow painted finish, riveted steel bands, securely fastened, heavy wire swing handle with wooden bail, (maple or birch), small mouse hole at one part of rim under the lid, otherwise good condition, 10" h (to rim), 12" dia.

Estimate \$500 - 700



### Lot 118

#### SHAKER WINDOW JACK

Pine, original gray painted finish, central turned hardwood pull, single canted edge, 32" l, 2 1/2" w.

Estimate \$300 - 500



### Lot 119

#### WORK BASKET

Ash, carved hoop handle, double wrapped rim, bottom reinforced with two notched ash sleds, overall good condition, (note: possibly used in the laundry), 9" h (to rim), 14" h (to top of handle), 26" l, 15" w.

Estimate \$600 - 800



### Lot 120

#### TAILORING COUNTER

Pine, early blue paint over original chrome yellow, top painted red, two long graduated drawers on left, two short graduated drawers on right, some breaks to upper lips, turned legs, double inset panel sides, walnut knobs, 33" h, 5' 7" l, 30 1/2" d, (Dr. J.J. and Miriam McCue collection).

Estimate \$3,000 - 4,000



### Lot 121

#### SHAKER OVAL BOX AND FANCY GOODS

Maple and pine oval box, original natural finish, three fingers (right to left), 2" h, 6" l, 4 1/4" w; Small scallop shell pincushion, 1 1/4"; Rare, round pincushion in the form of a biscuit/cracker, in light leather and silk, 1 3/4" dia; Miniature sweetgrass basket, fitted with a pink, cotton covered stuffed pincushion, 1" dia; (note: probably Sabbathday Lake Shaker community).

Estimate \$400 - 600



### Lot 122

#### THREE SHAKER HANGERS

Pine rectangular bar, with string holder, signed "Zilpha Blanchard.", 1 1/2" h, 15 1/4" l; Slightly curved, rounded hanger, with drumstick ends and string holder, 17 3/4" l; Rectangular bar, heavily arched, 16" l.

Estimate \$400 - 600



### Lot 123

#### PRODUCTION FOOTSTOOL; AND CUTLERY BOX

Maple, original dark stained varnish finish, small turned legs with side stretchers, canted sides, made to sell out of Mt. Lebanon, bright Trademark decal, 6 1/2" h, 11 1/2" sq top; Yellow pine cutlery box, carved inset medial handle, canted sides, finely dovetailed, varnish finish, 3 3/8" h, 12 3/4" l, 8 1/4" d.

Estimate \$400 - 600



### Lot 124

#### SHAKER RULE, AND STRAIGHT EDGES

Maple rule, original varnish, hand stamped numbered 1 to 12, stamped on back "1857" with sun above it; Two straight edges, walnut, original varnish finish, beveled, one initialed "C&S, 13" and 12" l.

Estimate \$300 - 500



### Lot 125

#### SHAKER FOUR DRAWER BLANKET CHEST

Pine, hinged lift lid with heavy molding around surround, interior open with support stick, over four graduated and lipped drawers, with original Shaker walnut threaded pulls, all on a dovetailed bracket base, slight remnants of original red stain on sides, top two drawers are partitioned for Shakers, two to a Room, (minor lip damage, overall good condition, 44" h, 38 1/4" w, 18 1/2" d, (ex. Upton collection, Troy, NY).

Estimate \$2,000 - 4,000



### Lot 126

#### RARE SMALL SHAKER DIPPER

Ash, maple handle, small copper tacked construction, symmetrical, two fingers on bowl, finely turned handle with medial scribe line, 2" h, 2 1/2" dia, 5 1/2" l handle.

Estimate \$500 - 700



### Lot 127

#### VENTILATION PIPE

Tin, used and placed over oil lamps to carry off unhealthy fumes, unusual configuration in adjoining pipe (shaped like a "W"), see page 118, *By Shaker Hands*, June Sprigg, 50" l, funnel-shaped pan diameter 11 1/4".

Estimate \$300 - 500



### Lot 128

#### SIX TIN SISTER'S KITCHEN ITEMS

Long-handled dipper, with hook for hanging, 24" l; Two smaller dippers with hangers, 9" and 12" l; Basin, four-sectioned flared sides, very finely constructed, 4" h, 15" dia; Two baking pans, flared sides, rectangular form, heavy wrapped rims, 1 3/4" h, 11 3/4" l, 8" d.

Estimate \$200 - 300



### Lot 129

#### SISTER'S STORAGE BOX

Butternut, original varnish finish, lidded with brass swing handle, original key tied to handle, unusual brass escutcheon, finely dovetailed case and lid, interior completely papered in pink with white decoration, Canterbury, NH, c. 1880, excellent condition, 6" h, 13" l, 8" d.

Estimate \$400 - 600



### Lot 130

#### CLASSIC SHAKER ONE-DRAWER TABLE

Birch and cherry, pine secondary, turned walnut knob, figured birch drawer front, finely thumbnail molded and dovetailed, two board top with medial spline, exceptional construction, 4" overhang in front and back, 3" overhang on sides, original handmade screws, finely turned legs, full-length drawer (22" l), chalk marks on bottom of drawer and inside of top "Basket Balls" dated "1922", Canterbury, NH, c. 1840, 27" h, 36" top, 25 1/4" w, (originally purchased from Courcier/Wilkins, includes receipt from 4/19/86).

Estimate \$4,000 - 6,000



### Lot 131

#### OVAL BOX

Finely formed, pine and maple, four fingers, copper tacks symmetrically aligned, stamped on the lid "J.S. Barrows.", original natural finish with patina, good condition other than small nick out of upper rim hidden by the cover, 4" h, 10 1/8" l, 6 7/8" d, (ex. Celeste and Edward Koster, Old Chatham, NY).

Estimate \$500 - 700



### Lot 132

#### RARE TWO-SLAT SISTER'S CHAIR

Maple, original reddish brown varnished stain, original woven tape seat, striped green, red and white, Shaker hand-forged iron sleeve (1") on back left foot, old Boston shipping and storage label on back left stretcher, Canterbury, NH, c. 1840, overall good condition and patina, 11 1/2" seat h, 30" overall h.

Estimate \$500 - 700



### Lot 133

#### SHAKER RUG WHIP

Maple and ash, labeled "Shaker Rug Whip", patented Oct 25, 1898, (note: purchased from the Jordan Auction, lot 445, by the consignor).

Estimate \$300 - 400



### Lot 134

#### FRAMED PHOTOGRAPH

Sabbathday Lake buildings and pathways, signed l.r. on the mat board "Sister R. Mildred Barker", 10 1/4" x 13 1/2" (sight), 16 1/2" x 20 3/4" (frame).

Estimate \$300 - 400



### Lot 135

#### SHAKER DESK BOX

Pine, finely dovetailed and breadboarded case, fitted maple lid, original full-length drawer sectioned for ink bottle, note papers and writing utensils, original yellow stain, wonderful turned pull on drawer, original worn green paper on base, Mt. Lebanon, NY, c. 1840, (similar example illustrated in *Shaker Furniture: The Craftsmanship of an American Communal Sect*, Edward Deming Andrews and Faith Andrews, Plate 38), 6 1/2" h, 20 1/2" l, 14 1/4" d, (WHA - Belfit collection and the Drs. John R. Ribic and Carla M. Kingsley Shaker Collection, Northeast Auctions, 8/2/08, Manchester, NH, lot 615).

Estimate \$3,000 - 5,000



### Lot 136

#### TWO SHAKER PEG RAILS

Pine and walnut with maple pegs, seven pegs (2 1/4") finely shaped, 35" l, 2 1/8" w, walnut rail has three 1 1/2" pegs, 40 1/2" l, 1 3/4" w, Enfield, CT on the back.

Estimate \$400 - 600



### Lot 137

#### THREE SHAKER ADVERTISING CARDS IN FRAME

"Shaker Extract of Roots (Siegel's Syrup) Cures Dyspepsia, A.J. White Proprietor...New York"; "Shaker Family Pills, Cure Sick Headache, A.J. White Proprietor...New York"; "Shaker Soothing Plasters, Good for Backache, A.J. White Proprietor...New York", oak frame, 11" x 13".

Estimate \$200 - 300



### Lot 138

#### SEED SPREADER

Pine and tin, original dark cranberry red painted finish, iron/wood handled crank, cloth strap (diamond shaped steel plates hold the strap), c. 1870, "Shakers saved time and seed with a 10-foot wooden seeder. Filled with small seeds, it hung from sower's neck by the cord and was balanced in front with the curved iron waist band. As he walked, the sower moved the lever, connected to a long-toothed wooden strip inside, forcing the seeds through holes in the tin strip on the bottom. The seeds sprinkled out so evenly that none was wasted, and the field was seeded in a fraction of the usual time (Canterbury, NH)." June Sprigg, page 42, *By Shaker Hands*, A.A. Knopf, Inc., 1975; 4" h, 10' 2" l, 4" d, (ex. Doug Towle, 9-4-05, lot 89A).

Estimate \$400 - 600



### Lot 139

#### TWO SHAKER BROADSIDES

Black ink on tan paper, "The Shaker Vegetable Remedy for Sick Headache, Constipation, Torpid Liver, Etc...D.C. Brainard, Mount Lebanon, Col. Co., N.Y.", 8" x 5" (sight); Black ink on tan paper, "Superfine Flour of Slippery Elm...D.J. Hawkins, New Lebanon, N.Y.", 5 1/4" x 3 1/4" (sight); both frames 12 1/2" x 10 1/2".

Estimate \$200 - 300



### Lot 140

#### SHAKER LIDDED STORAGE BOX

Pine, original mellow yellow stain, brass hinges, rounded front lip for lifting lid, exceptional condition, "ex collection Dr. J.J.G. McCue, June Sprigg collection", symmetrically nailed construction, 5" h, 17 1/4" l, 9" d. [Note: Paperback booklet "Shaker Original Paints & Patinas", June Sprigg, included in this lot, pictured on page 6, Cat. 4, on top of red chest.]

Estimate \$1,000 - 1,500



### Lot 141

#### OVAL BOX, DARNING FINGER, AND AWL

Maple and pine oval box, three finger style, original nut brown stain, 6" l, purchased Aug. 7, 1989 from Suzanne Courcier and Robert W. Wilkins, \$425., excellent condition, (original bill of sale included); Finely turned hardwood darning finger, rounded top with scribe lines, 5" l; Cherry wood turned Sister's sewing awl, with upper scribe line, steel pointed, 4 1/4" l.

Estimate \$400 - 600

### Lot 142

#### DOOR TRANSOM AND THREE SEED LABELS

Pine, original light gray painted finish, wood pegged at every corner, three 1" deep-set windows, set in with three Shaker printed seed labels, "Butternut" in blue, "Extract of Tomatoe" in yellow, and "Extract of Sarsaparilla" in green, each 2 1/4" x 4, (note: a clever use of a rare transom as a frame for labels), from the North Family Dwelling Building torn down in 1974, New Lebanon, NY, c. 1840, 30 1/2" l, 6 1/2" w (transom).

Estimate \$500 - 700



### Lot 143

#### ICONIC PHOTOGRAPH OF TWO SHAKER BASKETS

Shot by Paul Rocheleau, framed and matted, signed l.r., this photograph was one used in the *Shaker Design* book for the groundbreaking Whitney Museum Shaker Exhibit, NY, 1986, from the collection of June Sprigg.

Estimate \$1,000 - 1,500



### Lot 144

#### PHOTOGRAPH OF A SHAKER SPOOL COLLECTION

Red on white background, signed l.r. "Rocheleau/Sprigg", framed, glazed and matted, was shot by Paul Rocheleau, possibly used in an *Antiques Magazine* article on signed Shaker work from the late 70's or early 80's, spool set is in the collection of Hancock Shaker Village, 10" x 8" (sight), 15 1/4" x 12 1/4" (frame).

Estimate \$500 - 700



### Lot 145

#### TEACUP

White porcelain glaze with red and gold trim, and inscribed "To My Brother" in fancy script, interior note says "Mug originally belonged to Elder Delmer Charles Wilson, Chh family S.D.L. (8 July 1873 - 15 December, 1961) - Hayward", in pencil on verso "Given to John Munro by Arlen Hayward Benning, Given by John to me 4/28/89, June Sprigg.", 2 1/2" h.

Estimate \$200 - 400



### Lot 146

#### ORIGINAL PENCIL DRAWING BY JUNE SPRIGG

Shaker Sisters working in the kitchen at Canterbury, NH, original drawing used in *By Shaker Hands*, page 185, June Sprigg, 1975, Alfred A. Knopf, NY, framed, glazed and matted, 7 1/8" x 12" (sight), 13" x 17 1/2" (frame).

Estimate \$600 - 800



### Lot 147

#### PHOTOGRAPH OF SHAKER INTERIOR HALLWAY

Second floor of the Church Family Dwelling House at Hancock Shaker Village, two Shaker tilt chairs hanging upside down and two brooms in an alcove, signed l.r. "Sprigg/Rocheleau 1992", see page 163 *Shaker Built: The Form and Function of Shaker Architecture*, 1994, 13 7/8" x 10 3/4" (sight), 20 1/4" x 16 1/8" (frame); sealed book of *Shaker Built* accompanies the lot.

Estimate \$600 - 900



### Lot 148

#### PHOTOGRAPHS BY PAUL ROCHELEAU

Boxed set includes 10 photographs of Shaker architecture and building interiors, all signed l.r. "Paul Rocheleau", Hancock, MA, Mt. Lebanon, NY, Harvard, MA, Canterbury, NH, Sabbathday Lake, ME, South Union, KY (2), Pleasant Hill, KY (3), all black and white, 12 1/8" x 9", all affixed to mat board.

Estimate \$1,500 - 2,500





## Lot 149

### SHAKER REFERENCE BOOKS

Three-volume set of *Shaker Woodenware* including baskets and poplarware, Sprigg and Johnson; Three copies of "The Shaker Daybook", photos by Michael Freeman and Paul Rocheleau; *The People Called Shakers*, signed "Faith Andrews 1953", Edward Andrews; Two copies of unopened *Shaker Design*, hardbound and soft cover, by June Sprigg; "Hancock Shaker Village Collection Shaker Design", Sezon Museum Exhibition, Arthur Hiroshi Fujikado guest curator 1992, signed "For June, Kyoto 1992.", and an original Shaker Design poster for the exhibit, black ink on a cream background, in Japanese, showing the "Hat Form" from Hancock on page 108, Sezon Museum of Art, 1992, unused, mint condition, 40 1/4" x 28 1/2".

Estimate \$500 - 1,000



## Lot 150

### EPHEMERA

Including framed and matted postcard, Shaker Gift Shoppe and Dwelling House, Hancock, Mass; Framed 1839 woodcut Shaker Village in Hancock; "Table Monitor of the Shakers at Mt. Lebanon, N.Y.", bird's-eye maple frame, inscription on back "To June and Jim"; Christmas 1988 booklets "The Shaker Order of Christmas"; Blank lined receipt for R.M. Wagan & Co., Mount Lebanon, N.Y., 1880; "Extract of Butternut, New-Lebanon, N.Y." label, black print on green.

Estimate \$300 - 500



## Lot 151

### VERY FINE SWING HANDLED BASKET

Ash, exceptional rounded shape, arched swing handle set inside two carved ears, and ends fixed with screws, convex bottom, 8" h (to top of ears), 12" h (to top of handle).

Estimate \$800 - 1,200



## Lot 152

### SHAKER COVERED PAIL

Pine, original pumpkin/red stained finish, steel bands with black paint, clip shaped ends with rivets in the Shaker style, stenciled "42" on one side, overall good condition, 9" h, 9 1/2" dia at top, 10 1/2" dia at bottom.

Estimate \$500 - 700



### Lot 153

#### DOUGH BOX

Pine, original cherry red painted finish, single board construction, affixed with handmade screws, applied rectangular, slightly curved handle on top, rectangular handles on ends, canted sides symmetrically nailed, Watervliet or New Lebanon, NY, c. 1850, 13" h, 36" l, 18 1/4" w.

Estimate \$500 - 700



### Lot 154

#### SHAKER TREE OF LIFE

20th c. colored lithograph print on white paper, after the Hannah Cohoon painting dated 1854, framed and matted, good condition.

Estimate \$400 - 600



### Lot 155

#### EARLY SHAKER OVAL CARRIER

Pine, hickory and maple, original brown stain, two fingers, affixed with small copper tacks, small excellent repairs at ends almost unnoticeable, fine patina, (note: a classic Shaker carrier constructed with extraordinarily thin stock, with a fine tall carved handle well proportioned), 2 1/2" h (to rim), 6" h (to top of handle), 8 1/2" l.

Estimate \$600 - 900



### Lot 156

#### TWO HAND-PAINTED FLOOR MATS

20th c. prepared heavy canvas, painted and stenciled with the "Tree of Life" in greens and reds at either end, signed "Judy Rouche, 1993" on green border, 45" l, 28 1/2" w; Map of Shaker Village, Pleasant Village, Ky., signed "Elizabeth Chalfant, Winchester, Ky, 1983", (some paint loss on some of the buildings), 38 1/2" l, 24 1/2" w.



Estimate \$300 - 400



### Lot 157

#### GRAY WOOL CLOAK, AND SHAKER SILK BOOKMARK

Heavy gray wool, with red lined hood, two coral color ribbon ties in front (3' 6" l), 4' 5" l cloak; Framed bookmark "E.J. Neale & Co, Mt. Lebanon, N.Y.", showing a Sister wearing a cloak, front and back, signed in pencil "Barbara H.", fringed, slightly stained, 7 1/2" l, 3" w.

Estimate \$400 - 600



### Lot 158

#### FOUR EARLY GRADUATED OVAL BOXES

Maple and pine, original dark walnut stain, three fingers, decal on the side "1", 3 1/2" h, 8 3/4" l; Tiger birch and pine, original red stained varnish finish, four fingers, 3 1/2" h, 9 1/8" l; Maple and pine, light varnish finish, (dark walnut stain at bottom rear, otherwise good), 4 1/8" h, 10 1/8" l; Maple and pine, original light brown stain, five fingers, small repairs on right side, large good size, 5 3/8" h, 12 3/4" l.

Estimate \$2,000 - 2,500



### Lot 159

#### COLORED PRINT

Print of Hancock Shaker Village, numbered "54/500", signed bottom right "To the Nelsons Dec 17, 1983, Leonard Weber", framed, glazed and matted, 7" x 37 1/2" (sight), 15" x 45 1/2" (frame).

Estimate \$400 - 600



### Lot 160

#### SHAKER LAUNDRY CART

Maple and yellow pine, rectangular sides joined by horizontal turned rails, on four cast iron and turned maple wheels, with later fitted tray top and bottom board, late 19th c., (note: similar cast iron and wood wheels are often found on early Shaker beds), 15 1/4" h, 14" w, 20" l, tray top: 15 7/8" x 24", (ex. collection of Edward Deming Andrews and Faith Andrews; Skinner auction, "The Andrews Shaker Collection", 6/15/14, lot 35).

Estimate \$800 - 1,200



### Lot 161

#### VERY EARLY LONG SHAKER TABLE

Pine and maple, two board top with breadboard ends, single drawer with turned Shaker cherry pull, dovetailed, dated under the top and initialed "Feb 3rd 1822, E.W.", 28 1/2" h, 7' 1 1/2" l, 29 1/2" w, (ex. Upton collection, Troy, NY).

Estimate \$2,000 - 4,000



### Lot 162

#### SHAKER BENCH

Pine, original red painted finish, scrub top, four dovetailed side braces, gently arched ends, 17" h, 6' 2" l, 12" w, (ex. Upton collection, Troy, NY).

Estimate \$600 - 800



### Lot 163

#### EARLY SHAKER ADD-ON WORK CHEST

Butternut and pine, old finish, dovetailed case, six dovetailed drawers, with threaded and turned pulls, top two drawers are divided into three sections each, back of top has a 7 1/2" deep well (2 1/4" wide) for storage, 11 1/4" h, 31 1/2" w, 8 1/2" d.

Estimate \$600 - 800



### Lot 164

#### TWO SHAKER TEXTILES

Sister's tie on apron in red, squares, and embroidered red Turkey Trot outline, three deep pockets, white ties, 17" x 16 1/2"; Sister's patterned cloth in red, white and blue squares, with embroidered border, 17" x 17 1/2".

Estimate \$300 - 400



### Lot 165

#### SHAKER WORK TABLE

Butternut drawer fronts, poplar top, and cherry wood legs and skirt, breadboarded top over a pair of side-by-side drawers, dovetailed with thumbnail moldings, original turned pulls, finely turned cherry legs, double pegged into skirt, a fine classic style table with old finish, good condition, 27 1/2" h, 4' 9" l, 31" d, (ex. Upton collection, Troy, NY).

Estimate \$2,000 - 3,000



### Lot 166

#### SISTER'S SEWING PRINT

"Hands to Work, Hearts to God" colored print, showing three Sister's sewing and cutting material next to a penny foot stove with irons, signed "Constantine Kermes 78" in pencil l.r., matted and framed, 10 1/2" x 15" (sight), 17" x 21 1/2" (frame).

Estimate \$200 - 300



### Lot 167

#### TWO BASKETS

Small, oval, pine gathering basket, dark stained finish, multiple slatted and flared sides attached with wire, nailed at the bottom, fixed handle with three medial scribe lines, Shaker style, 4" h (to rim), 9" l, 5 3/4" w; Rectangular black ash splint woven basket, single wrapped rim, possibly used for cutlery or drying herbs, open weave bottom, nice nut brown patina, good condition, 4 1/4" h, 16" l, 11 3/4" w.

Estimate \$400 - 600



### Lot 168

#### TWO SHAKER BOOKS; REFERENCE BOOKS, AND CATALOGS

*The Shakers and Their Homes*, Charles Edson Robinson, Canterbury Shaker Village, 1893; and *The Shakers: A Concise History of the United Society of Believers called Shakers*, Charles Edson Robinson, Canterbury Shaker Village, 1893; along with assorted Shaker reference books and Shaker auction catalogs, including copies of the Stokes Collection, Sieber, Skinner, Upton, Sabbathday Lake, Willis Henry (5), etc., and two newspapers "The World of Shaker", Spring 1973 and 1974.

Estimate \$150 - 250



### Lot 169

#### ROUND LIDDED BOX

Maple and pine, original dark red painted finish, nailed lap closure with small evenly spaced copper tacks, very good color and patina, 3 3/8" h, 4 3/4" dia.

Estimate \$300 - 500



### Lot 170

#### CUPBOARD OVER DRAWERS

Cupboard over drawers, cherry, poplar and pine, original red stained finish, double inset paneled front doors, opening with brass latches, three-shelf interior, each over four graduated and dovetailed drawers, old wooden pulls are replacements, dovetailed case, c. 1860, 5' 1/2" h, 4' 4 1/4" w, 14" d.

Estimate \$3,000 - 4,000



### Lot 171

#### NEEDLE PILLOW, AND SEWING CARRIER

Red and white stripe cotton needle pillow, sewn in the form of a tomato cushion, 4 3/4" dia; Sister's sewing carrier, maple, bentwood swing handle, fitted in pink with strawberry emery, tomato pincushion, beeswax, and poplar needle case, stamped on bottom in black with Sabbathday Lake Trademark, very good condition, 2 3/4" h (to rim), 8" l, 5 3/8" w.

Estimate \$400 - 600



### Lot 172

#### FOUR SMALL OPENWORK BASKETS

Small black ash splint, openwork design, round tops, hexagonal bottoms, all are in good condition with a few minor breaks, 1 3/4" to 3" h. [Note: The Shakers made these fancywork small baskets for many purposes. Usually as inserts into other larger sewing baskets to hold thimbles and other small sewing objects.]

Estimate \$200 - 400



### Lot 173

#### TWO PIE LIFTERS, AND LAUNDRY STICK

Maple handles, with cast steel double prong pie lifters, old patinated finish on the handles, stringed for hanging on peg, 22" and 17" l; Maple stick, early fine patina handled use, for stirring laundry in washer, stringed for hanging on peg, 28 1/2" l.

Estimate \$200 - 400



### Lot 174

#### FOUR SHAKER GRAIN MEASURES

Oak and pine, original varnish finishes, three are oval stamped on sides "Shaker Society, SabbathDay Lake, Me", 6 1/2" h, 12" dia; 3 7/8" h, 6" dia; 4" h, 6" dia (with original lid); 5 3/4" h, 8 3/4" dia, in old red painted finish, double stamped branded on bottom "W V N.Y.".

Estimate \$300 - 500



### Lot 175

#### SMALL EARLY SISTER'S SIDE CHAIR

Maple, original light brown stained finish, three slats graduated upward, red stripe taped seat, Watervliet, NY, c. 1830, 13" seat h, 36 1/2" overall h.

Estimate \$500 - 700



### Lot 176

#### COLLECTION OF SHAKER SISTER'S SEWING ARTICLES

Needlebooks in the shapes of bonnets, silk wraps, hearts, pincushions, ribbon tool holders in pink florals with pink bows, (17 pieces).

Estimate \$200 - 300



### Lot 177

#### TWO SHAKER SISTER'S SEWING LAP BOARDS

Variiegated maple, cherry and walnut, breadboarded, rounded corners, shows signs of use, 36" x 21"; Poplar, cleated with small brass screws, has measuring device within board itself with hand stamped inches, with segments in 4 1/2", dated on underside at the base "1879.", shaped cutout to fit Sister's waist, 36" x 22".

Estimate \$300 - 600



### Lot 178

#### SHAKER ROCKING ARMCHAIR

Maple, original varnished walnut stain, four slats, production shawl bar rocker, mushroom capped curvilinear arms, later blue and cream taped seat, stamped "6" on back of top slat, Shaker decal on bottom back slat, 14 1/2" seat h, 40" overall h.

Estimate \$500 - 700



### Lot 179

#### SEAT PLUSH

Red woven wool, used as a cushion on Victorian chairs, sold in Shaker Store, stuffed with horsehair or shavings, used to make sitting more comfortable, moth damage, 3" h, 18" x 15".

Estimate \$300 - 500



### Lot 180

#### ADJUSTABLE WORK STOOL

Maple central section, oak legs, pine seat, revolving top to adjust seat height, tripod base threaded, constructed with handmade screws, slanted seat so work can be done at an angle, 25" adjustable h, 13" dia seat.

Estimate \$300 - 500





### Lot 181

#### LIDDED LUNCH PAIL

Maple and pine, swing handle pinned on inside of container, "35-35" on bottom, (note: interesting feature of swing handle has extra tongue shaped wooden piece to extended handle from lid), North Family, New Lebanon, NY, c. 1870, 5" h (to top of lid), 8 1/2" h (to top of handle), 7" dia, (ex. Bissland collection).

Estimate \$300 - 500



### Lot 182

#### OVAL BOX, CARRIER, MEASURE, FEATHER BED SMOOTHER

Maple and pine, natural finish, four fingers with copper tacks, scratches along sides, c. 1860-1870, 4" h, 10 1/8" l; Lidded oval carrier, pine and maple, four fingers, bentwood swing handle, overall good condition, 3 1/8" h, 9 1/4" l; Feather bed smoother, finely carved birch with straight handle, 18" l; Large measure, oak and pine, old finish, oval stamp in black on side "Shaker Society Sabbathday Lake, Me.", appears to have had side handles, 7 3/4" h, 14 3/4" dia.

Estimate \$400 - 600



### Lot 183

#### FOUR SHAKER OVAL BOXES

Maple and pine, 19th c., three and four fingers, copper tacks, bottom box is 2 3/4" h, 13 1/2" l; third box is 4 3/4" h, 12" l; second box is 3 1/2" h, 8 1/2" h; top box is 2 1/2" h, 6 1/8" l; all appear in good condition, and in old finish and patina.

Estimate \$1,500 - 2,000



### Lot 184

#### DROP LEAF WORK TABLE

Birch, original brown stained finish with patina, two 15 1/2" deep leaves, 3' 9 1/2" l on turned legs double pegged into the skirt, 29" h, 45 1/2" l, overall good condition, 6 3/4" overhang.

Estimate \$800 - 1,000



**Lot 185**

**PEG RAIL**

Cherry, with three small Shaker pegs, stamped "Abner" above middle peg, 20 1/2" l, 4 1/2" w.

Estimate \$200 - 400



**Lot 186**

**CHILD'S ROCKING CHAIR**

Maple and birch, extended acorn finials, three graduated slats, gray tape seat, Mt. Lebanon, NY, 13" seat h, 36" overall h.

Estimate \$200 - 300